


# Workshop: DERBY UPDATES





# CPD 2024/25

## Graeme Ferguson

## Laura Horvath



# Attachment and Trauma

- Conference – “The Rage for Life” by David Taransaud 12<sup>th</sup> Nov 2024
- Relational Attachment and Trauma Informed Classrooms - 7 days

Day 1 20<sup>th</sup> Sept 2024

Day 2 18<sup>th</sup> Oct 2024

Day 3 6<sup>th</sup> Dec 2024

Day 4 10<sup>th</sup> Jan 2025

Day 5 31<sup>st</sup> Jan 2025

Day 6 28<sup>th</sup> Feb 2025

Day 7 28<sup>th</sup> Mar 2025

- Play Therapy 25<sup>th</sup> & 26<sup>th</sup> February 2025
- Drawing & Talking 12<sup>th</sup> March 2025
- 8 module attachment and trauma elearning - <https://virtualschool.derby.gov.uk/>



# Relational Approaches in Schools

**Two Conference Days – Spring Term 2025 – dates tbc**

‘Trauma informed theory to trauma informed practice’ – (Dave Whittaker)

Case Study: Carr Manor Community School

**Whole School Training Webinars**

– available on demand for academic year 24/25

Behaviour - is there another way? (Dave Whittaker)

Neurobiology of learning (Dr Andrew Curran)





# ATTENDANCE

## Laura Horvath





# DERBY CITY PEIA ATTENDANCE PROGRAMME



## CPD OFFER FOR SCHOOLS

We are providing a range of funded CPD and Networking opportunities for all schools to access to support attendance.  
**CONTACT US:** Laura Horvath (PEIA Attendance Programme Manager) [laura.horvath@dcct.co.uk](mailto:laura.horvath@dcct.co.uk)

Further information and booking



[www.derbydirection.org.uk/cpd-and-networking/](http://www.derbydirection.org.uk/cpd-and-networking/)

### EBSNA TRAINING

Open to all settings who have not yet accessed EBSNA training, this full day course will explore 'Emotionally-based school non-attendance'.

You will develop an understanding of the impact of EBSNA, how to identify those at risk and how to support them using the ATTEND framework.

Date: 19th Nov (9:00am - 4:00pm)  
Venue: Pride Park Stadium

### TRAIN-THE-TRAINER EBSNA

During this half day workshop, Dr Judith McAllister will present materials and guidance on how to deliver EBSNA training to your school staff.

Suitable for those who have previously attended the full EBSNA training (from Jan 2023 - May 2024).

Date: 25th Sept (10:00am - 1:30pm)  
Venue: Pride Park Stadium

### NETWORKING

Attendance Officer Network:  
[fiona.tizzard@derby.gov.uk](mailto:fiona.tizzard@derby.gov.uk)

Attendance Leads Strategy Network:  
[laura.horvath@dcct.co.uk](mailto:laura.horvath@dcct.co.uk)  
(11th July, 19th Sept)

### EBSNA PATHWAY: BREAKFAST BRIEFING

A session to launch the EBSNA tool kit, developed by the LA, including:

- Sharing of the EBSNA Graduated Approach
- Signposting to strategies and interventions that school leaders can use to support their CYP
- Available resources to use when working with families of CYP with EBSNA
- Introduction and explanation of the new Health Needs Education Panel and referral process

Date: 25th Sept (8:00am - 9:30am)  
Venue: Pride Park Stadium

### PROFESSIONAL SEMINARS

Throughout the year we will be offering virtual seminars on a range of key topics to support attendance.

These will be delivered by national experts and recognised speakers:

- Vic Goddard (22nd Oct)
- Team Square Peg
- More added throughout the year

### BRIDGE THE GAP

A half day workshop which will explore some of the barriers presented by mental health needs of students in regularly attending school, as well as suitable interventions and approaches to creating a positive and nurturing environment.

Date: 6th Nov (1:00pm - 4:00pm)  
Venue: Pride Park Stadium

### DIGITAL CONFERENCE FOR ATTENDANCE

A full day online conference led by national experts in the field of attendance to support you in creating a strategic whole school attendance culture.

*Improving School Attendance: A comprehensive tool kit of proven practical approaches*

The sessions will take a comprehensive overview of the issues and solutions, exploring:

- Policy
- Guidance and data
- Practice and interventions
- Parent engagement

Date: 9th October (9:30-3pm)  
Online

Usually £215 (+VAT) per delegate but FREE to all Derby City schools.



# Landau Forte College Derby Attendance Hub



- LFCD Attendance Hub will offer support and resources to improve schools approach to managing attendance and reducing absence. We are keen to work with Derby City secondary schools.
- We will share what has worked for us, explaining how we have improved attendance and reduced persistent absence. We have a dedicated Attendance Hub resource page on our website.
- If you want support from the Hub or would like to visit us please just get in contact with a member of the team.



# Landau Forte College Derby Attendance Hub Team



- Alison Brannick – Principal

[abrannick@landau-forte.org.uk](mailto:abrannick@landau-forte.org.uk)

- Mark Andrews – Vice Principal

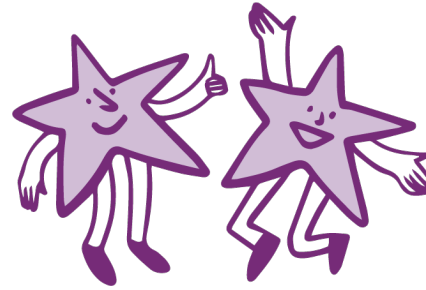
[mandrews@landau-forte.org.uk](mailto:mandrews@landau-forte.org.uk)

- Lucy Hawley – Attendance Manager

[lhawley@landau-forte.org.uk](mailto:lhawley@landau-forte.org.uk)

*Have you tried...*  
We're at the Marketplace today!





# ATTENDANCE MEDIA CAMPAIGN

Laura Horvath



**UNMISS**  
*able*

Because school means *more*



# Coming soon ...



A city-wide media toolkit to support communication around the importance of attendance and the value in attending school.

- It is a **POSITIVE** messaging campaign – focussing on why school is unmissable, and what students feel they gain by being in school.
- Has been developed through pupil voice/consultation and will feature the words and voices of our young people.
- It's important to acknowledge barriers, and how, with support, we may be able to overcome them.



**UNIMISS**

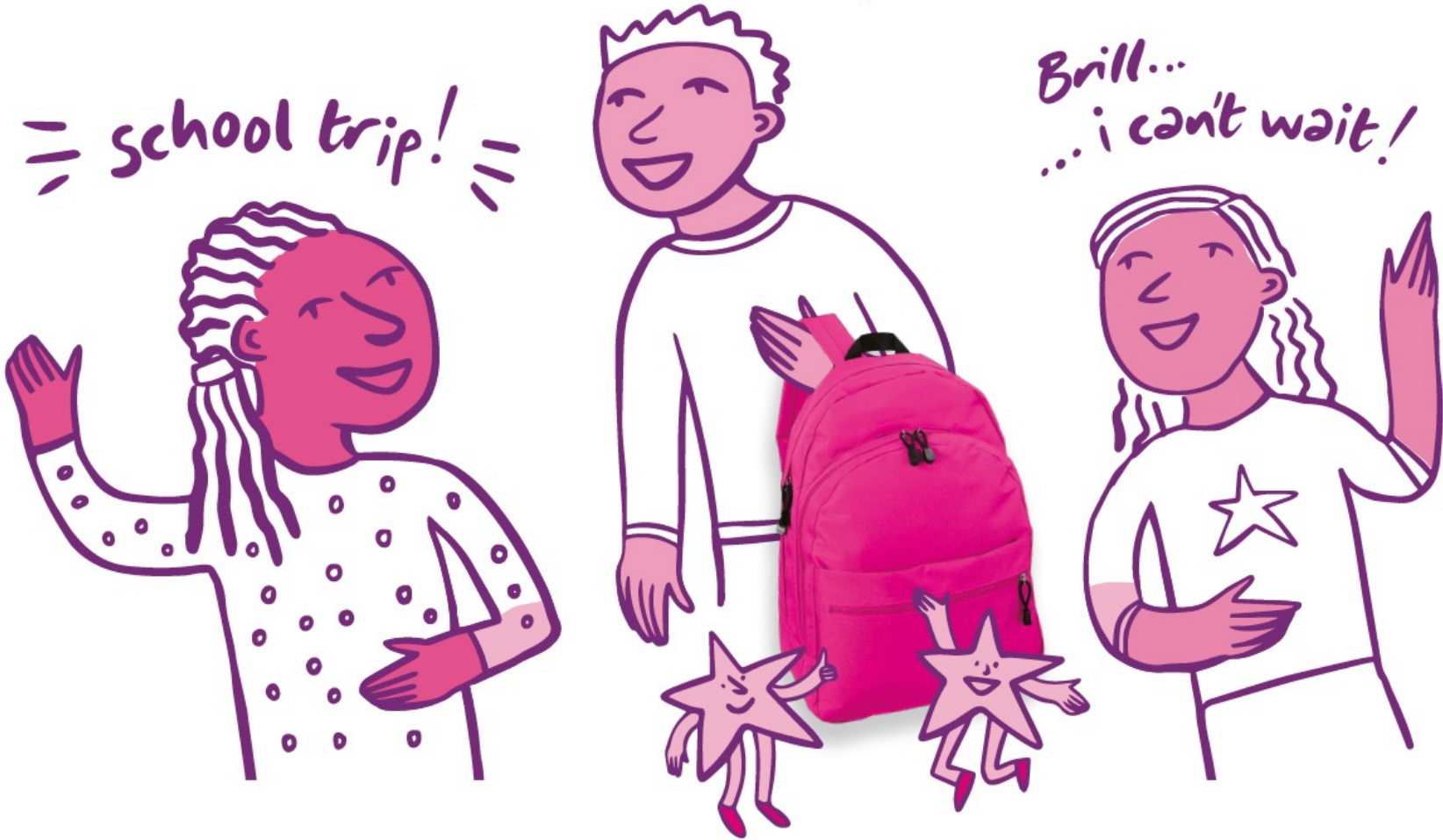
*able*

Because school  
means *more*

Whoop Whoop!

= school trip! =

Brill...  
...i can't wait!





# The *ten* campaign themes...

**UNMISS**  
*able*  
experiences

**UNMISS**  
*able*  
friendships

**UNMISS**  
*able*  
teachers

**UNMISS**  
*able*  
moments

**UNMISS**  
*able*  
support

**UNMISS**  
*able*  
learning

**UNMISS**  
*able*  
fun

**UNMISS**  
*able*  
opportunities

**UNMISS**  
*able*  
achievements

**UNMISS**  
*able*  
memories

# What's *included* ...



- Ten campaign themes, each supported by its own positive message
- Ten short animated reels, one for each campaign theme
- Posters and stickers
- Both primary- and secondary-age content produced in a range of languages
- Suggested timeline for release of each resource and how to have greatest impact.



# How to access the *toolkit*...

The campaign toolkit and assets will be released in phases from August 2024.



Scan me  
to find  
out more





# EBSNA PATHWAY

## Francesca Potter



# Emotionally Based School Non-Attendance (EBSNA)

- **An Emotionally Based School Non Attendance (EBSNA) pathway** will be introduced from September 2024. This provides resources and toolkits for schools to use when pupil's emotional health is preventing them from attending school regularly.
- The pathway is accompanied by the new **Policy for supporting the education of Children & Young People with Health Needs.**
- A Health Needs Education Panel will be formed and referrals will be triaged by a variety of professionals who are able to offer support and guidance to schools, CYP and their families.

# Emotionally Based School Non-Attendance (EBSNA)

There may be times further professional support and advice is needed to make appropriate interventions. The EBSNA Pathway below outlines how Schools, Local Authority agencies and Health Services can offer support and processes to children, young people and their families in Derby City.

Stage 1	Stage 2		Stage 3	Stage 4
<p><b>Emerging Concerns</b></p> <p>Relational Approach Pupil voice Family engagement Parental meetings Trusted adult Safe space Reasonable adjustments School based interventions CPD and networking</p> <p>School Health referral, including Health Needs Assessment Family Hubs</p> <p>Local Offer signposting to services including Mental Health Pathway Mental Health Whole School Approach Derby &amp; Derbyshire Emotional Health and Well Being website</p>	<p><b>Escalating Concerns</b> <i>All of the Stage 1 interventions, and ...</i></p> <p>EBSNA Graduated Approach EBSNA Toolkit for schools Individual Health Care Plan The ATTEND Framework EBSNA Toolkit for families Reintegration plan Virtual Learning Package Blended timetable</p> <p>Education Welfare Service Family Hubs The Attendance Project (Educational Psychology Service)</p> <p>School Counsellor Compass Changing Lives MHST &amp; Early Intervention Targeted Support Specialist Community Advisors (SCAs)</p>	<p>Health Needs Education Panel</p>	<p><b>Short Term Intervention</b></p> <p><i>Stage 3 aims to help to improve the health condition of the child or young person, so they can return to mainstream education.</i></p> <p>Turnaround placement at Castle Health Needs Provision Step up or step down to the new ER (September 2025) Alternative short term EOTAS or outreach package Early Help Social Care</p> <p>CAMHS or other mental health support service</p>	<p><b>Long term interventions</b></p> <p><i>Stage 4 could be a child or young person who has accessed a Tier 4 acute service, inpatient service or needing long term intervention due to their complex Mental Health needs</i></p> <p>Outreach service or Home Tuition Early Help Social care Multi Agency Approach</p> <p>CAMHS</p>



If attendance is a concern, a Graduated Response should be followed, in the same way you would if a pupil was struggling with attainment:

## Graduated Response



# Universal Approaches:

Training need in school/setting

Identification of additional need

Providing time for families to share concerns and agree support

Communication with staff team, including Mental Health Lead and key adults working with the child/young person

## Targeted:

Assess-Plan-Do-Review processes

Gather Information (use of Attend Framework)

Meeting between family and school staff

Timely review

Maintain communication between school staff, pupil, parents and relevant agencies

# Specialist Support:

Assess-Plan-Do-Review processes

Meeting between specialist teachers/education practitioners, family and school staff making reference to information gathered (Attend)

Timely review

Maintain communication between school staff, pupil, parents and relevant agencies



# THE DERBY PROMISE

## Richard Gerver

