

# CPD & NETWORKING



**DERBY CITY  
VIRTUAL SCHOOL**  
Thriving *through* Relationships

THE VIRTUAL SCHOOL AND INCLUSION PARTNERSHIP HAVE SHAPED AN EXTENSIVE CPD OFFER FOR SCHOOLS TO ACCESS.



Because school means *more*

- COACHING CIRCLES
- POSITIVE REGARD
- RELATIONAL, ATTACHMENT AND TRAUMA INFORMED CLASSROOMS
- THERAPEUTIC APPROACHES
  - EBSNA
- INCLUSIVE ATTENDANCE
- BAGS OF CHARACTER
- WELLBEING IN THE CLASSROOM

- 'COME AND SEE US' SCHOOL OPEN DOOR VISITS
- INCLUSION COACHING CIRCLES
- VIRTUAL UPDATES

THROUGHOUT THIS YEAR WE WILL RUN A RANGE OF INCLUSION NETWORKING OPPORTUNITIES TO LEARN FROM EACH OTHER AND SUPPORT OUR NETWORK.

Because school means *more*

# CARR MANOR

## SMALL GROUP PASTORAL STRUCTURES

### (COACHING CIRCLES)

Face to Face:

all 09:30-15:30

02/10/2025

27/11/2025

24/01/2026

(attend all dates)

Online:

3x 90 minute  
group mentoring  
sessions in Spring  
2, Summer 1 and  
Summer 2



**INCLUSION  
PARTNERSHIP**



**DERBY CITY  
VIRTUAL SCHOOL**  
Thriving through Relationships

**Pride Park Stadium & online**

Free to access, funded through the Virtual  
School and Inclusion Partnership

<https://inclusionpartnership.co.uk/cpd-and-networking/>

email- [graeme.ferguson@derby.gov.uk](mailto:graeme.ferguson@derby.gov.uk)



## COACHING LEAD SUPPORT & TRAINING

### IMPLEMENTATION: DEVELOPING SGPS IN YOUR SETTING

The course is aimed at schools in Derby who have already started to implement small group pastoral structures (coaching circles), or who are looking to do this moving forward. You will have already attended the Carr Manor training organised by the Virtual School and Inclusion Partnership earlier in 2025.

The face-to-face sessions will be an opportunity for delegates to develop their implementation and to hone core coaching skills. Our framework design tool empowers delegates to design what works best for their setting.

The follow up online mentoring sessions provide key opportunities for reflection and feedback. Delegates will face challenges and pitfalls; these sessions create a supportive space in which to share dilemmas and ideas for moving forward.

**Because school means *more***

# CARR MANOR

## SMALL GROUP PASTORAL STRUCTURES

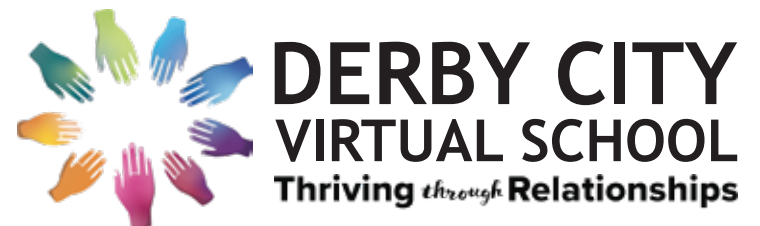
### (COACHING CIRCLES)

Once per half term

Online

Free of charge, funded through the Virtual School/ Inclusion Partnership

email- [graeme.ferguson@derby.gov.uk](mailto:graeme.ferguson@derby.gov.uk)



## IMPLEMENTATION

### HEADTEACHER/SENIOR LEADER GROUP MENTORING

A key component of successful implementation of small group pastoral structures, is that the practice is central to the philosophy and culture of the organisation. Leaders must lead the way in order to change the culture and way of thinking of staff and children.

An implication of implementing SGPS is it stimulates the need for change in other school systems that requires strategic leadership.

We offer mentoring once per half term, to create a space where leaders can bring challenges and dilemmas and work through, with high challenge and high support. Group mentoring helps to generate and maintain a local network of support.

Please note this is for schools that have already attended the Carr Manor training organised by the Virtual School and Inclusion Partnership earlier in 2025.

# Because school means *more*



# CARR MANOR

## IMMERSION DAY WITH A DERBY PERSPECTIVE

19/03/2026 - 09:30.15:30

Pride Park Stadium

Free of charge, funded through the Virtual School/ Inclusion Partnership

<https://inclusionpartnership.co.uk/cpd-and-networking/>

email- [graeme.ferguson@derby.gov.uk](mailto:graeme.ferguson@derby.gov.uk)



**INCLUSION  
PARTNERSHIP**



**DERBY CITY  
VIRTUAL SCHOOL**  
Thriving through Relationships



### COURSE OUTLINE

This day is aimed at leaders who are beginning their journey toward developing inclusive cultures through relational, restorative, trauma informed practice. The day is facilitated by Carr Manor Community School, who share the way they work and the impact this has had.

Delegates will experience first-hand the way Carr Manor Community School work, will learn about their journey towards an inclusive culture and will reflect on their own next steps and how this way of working can be incorporated into their practice. This is complimented by local Derby schools sharing their stories of implementation of principles, processes and practices that build an inclusive culture.

#### **Components of an Immersion Day with a Derby perspective include:**

- Small group pastoral structures – Coaching
- Proactive processes
- Reactive processes
- Developing people – children (curriculum, extra-curricular)
- Developing people – adults (professional learning, line management)
- Between-school collaboration

**Because school means *more***

# IMMERSION DAY AT CARR MANOR COMMUNITY SCHOOL

18/05/2026 - 07:40-16:00



Carr Manor Community School  
(in Leeds)

Free of charge, funded through the Virtual  
School/ Inclusion Partnership

<https://inclusionpartnership.co.uk/cpd-and-networking/>  
email- [graeme.ferguson@derby.gov.uk](mailto:graeme.ferguson@derby.gov.uk)



## COURSE OUTLINE

On an Immersion Day, delegates experience a whole school approach to developing an inclusive culture through relational and restorative practice in a mainstream through school (ages 2-19). They will identify how relational and restorative practice can support their setting moving forward.

Delegates join Carr Manor Community School's SLT circle, staff circles and pupil coaching circles (primary or secondary). They speak with senior staff and children about their experience of school and the way the school values are embodied in practice. They see and hear how leaders work with SEND, Safeguarding, Inclusion and Curriculum teams to deliver progress.

Because school means *more*

# RELATIONAL, ATTACHMENT & TRAUMA INFORMED CLASSROOMS

03/10/25 - 09:00-15:30  
24/10/25 - 09:00-15:30  
28/11/25 - 09:00-15:30  
09/01/26 - 09:00-15:30  
30/01/26 - 09:00-15:30  
06/03/26 - 09:00-15:30  
27/03/26 - 09:00-15:30

7 day course

Pride Park Stadium

Free of charge, funded through the Virtual School/ Inclusion Partnership

<https://inclusionpartnership.co.uk/cpd-and-networking/>  
email: [elizabeth.williams@derby.gov.uk](mailto:elizabeth.williams@derby.gov.uk)



**INCLUSION  
PARTNERSHIP**



**DERBY CITY  
VIRTUAL SCHOOL**  
Thriving through Relationships



## COURSE OUTLINE

This course takes relevant concepts from neurodevelopmental research and attachment theory, brings them into the classroom, and empowers school staff to apply this knowledge to the teaching and learning process. It is aimed at all school staff, whether working directly with children, or working strategically and systemically.

- Understanding the impact of stress and protective factors in school.
- It starts with us. State dependent functioning and the importance of regulated adults.
- Sequential organisation of the brain and somatosensory strategies for regulation.
- Ways of relating and the impact on learning.
- Behaviour as communication. Strategies for understanding and responding to distressed behaviour.
- Repair in relationships.
- Reflections and next steps.

Course Tutor: Alison Lumley

Alison's career in education spans over 20 years, teaching and leading in schools with inclusive practice. Alison brings her knowledge of neurodevelopment and attachment theory, makes it practical, and aspires towards success for children who struggle in school.

Please note we will do our best to stick with planned tutors and dates, but they may be subject to change. Places for this course are limited.

# Because school means *more*



# PLAY THERAPY

03/02/26 - 09:00-16:00  
04/02/26 - 09:00-16:00

(two day course)

Pride Park Stadium

Free of charge, funded through the Virtual School/ Inclusion Partnership

<https://inclusionpartnership.co.uk/cpd-and-networking/>

email: [elizabeth.williams@derby.gov.uk](mailto:elizabeth.williams@derby.gov.uk)



**INCLUSION  
PARTNERSHIP**



**DERBY CITY  
VIRTUAL SCHOOL**  
Thriving *through* Relationships



## COURSE OUTLINE

This training covers:

- Understanding the guiding principles of a Theraplay-informed model for working relationally with children and young people in education settings
- Learning simple, playful and practical ways to build relationships and regulate children and young people within education settings
- Considering how Theraplay principles can be applied to everyday education challenges, using whole classroom, small group or individually-targeted interventions.

Trainers:

Dr Helen Rodwell, Consultant Clinical Psychologist, Certified Theraplay® Practitioner, Supervisor and Trainer, Certified DDP Practitioner

Jo Williams, Dramatherapist, Certified Theraplay® Practitioner, Supervisor and Trainer.

**Because school means *more***

# DRAWING & TALKING

28/04/26 - 09:00-16:00

Pride Park Stadium

Free of charge, funded through the Virtual School/ Inclusion Partnership

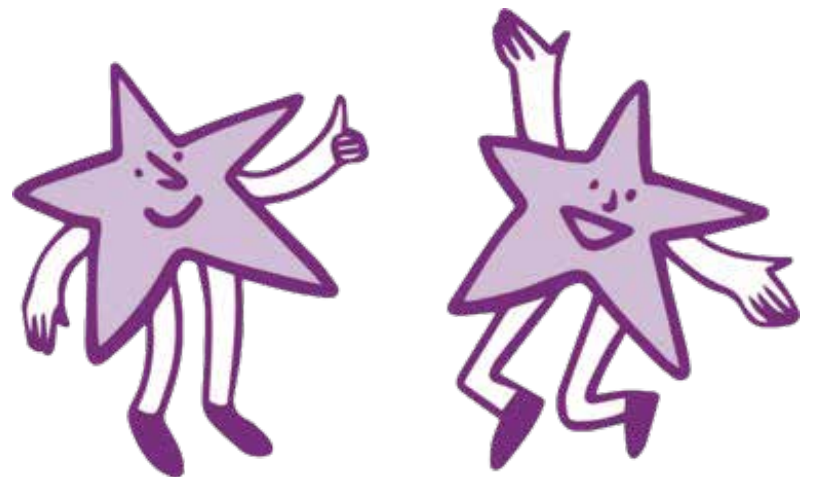
<https://inclusionpartnership.co.uk/cpd-and-networking/>  
email: [elizabeth.williams@derby.gov.uk](mailto:elizabeth.williams@derby.gov.uk)



**INCLUSION  
PARTNERSHIP**



**DERBY CITY  
VIRTUAL SCHOOL**  
Thriving *through* Relationships



## COURSE OUTLINE

Drawing and Talking is a safe, easy to learn method of working with children, teenagers and young adults, to help with underlying emotional difficulties that may be affecting their learning and behaviour. The core of the method is encouraging the pupil to draw with a person with whom they feel comfortable, regularly, at the same time each week, and this person asking some non-intrusive questions about the pupil's drawings. Over time, a symbolic resolution is found to old conflicts, old trauma is healed, and the pupil is more able to control their behaviour and better able to access the curriculum.

- It is suitable for anyone who is working with vulnerable children and young people. No previous knowledge, training or experience is necessary.
- Participants will learn how to get started, how to run a session and how to deal with common problems which can arise.
- Drawing and Talking is a serial drawing technique which takes place over a 12-week period. During the training there will be an opportunity to see how drawings change over time as this powerful, yet safe, healing method takes effect.
- The theoretical component to the training will teach basic neurobiological theory relating to trauma, how to create a safe and containing space, the importance of endings and losses, how to deal with distress and child protection issues.
- The experiential component will be an opportunity to develop the technique of mentally 'holding' and 'being with', another human being.
- Participants will be expected to draw but no special artistic ability is necessary
- Following the course you will have your first year's membership included. Membership includes access to 1 year's support via access to group monthly coaching calls.

Please note we will do our best to stick with planned tutors and dates, but they may be subject to change. Places for this course are limited.

Because school means **more**



# FOETAL ALCOHOL SPECTRUM DISORDER

02/12/25 - 09:00-13:00

Pride Park Stadium

Free of charge, funded through the Virtual School/ Inclusion Partnership

<https://inclusionpartnership.co.uk/cpd-and-networking/>

email: [elizabeth.williams@derby.gov.uk](mailto:elizabeth.williams@derby.gov.uk)



**INCLUSION  
PARTNERSHIP**



**DERBY CITY  
VIRTUAL SCHOOL**  
Thriving *through* Relationships



## COURSE OUTLINE

This training will offer all that attend the opportunity to become more aware of the condition; its causes and effects, the impact that it can have on people and the strategies that can be applied to limit those impacts and allow those affected to achieve. It has been written to specifically address the nationally identified concerns with the collaboration of those working at the national cutting edge as far as recent developments in the FASD field are concerned. All of the training is based on professional and lived experience of working and living with affected children and young adults. The course will identify new resources to use with and empower those young people who have FASD and help others to better understand the condition. All attendees will also have access to electronic resources for their use in raising awareness of the condition.

Trainer: Brian Roberts, The National Organisation for FASD

Please note we will do our best to stick with planned tutors and dates, but they may be subject to change. Places for this course are limited.

**Because school means *more***

# INCLUSIVE ATTENDANCE

23/09/25 - 09:00-12:30  
05/11/25 - 09:00-12:30  
12/02/26 - 09:00-12:30  
02/06/26 - 09:00-12:30



Pride Park Stadium



This course is subsidised by the Inclusion Partnership, but there is a charge of £450+VAT per school.

<https://inclusionpartnership.co.uk/cpd-and-networking/>

email: [jo.wilkinson@dcct.co.uk](mailto:jo.wilkinson@dcct.co.uk)



## COURSE OUTLINE

This four-stage model builds sustainable, inclusive attendance cultures that:

- Reduce persistent & severe absence
- Surpass the Ofsted 2025 Framework
- Align fully with DfE Statutory Guidance
- Empower all staff through shared responsibility

Programme outline and what you'll gain:

- Access to the UK's only accredited pedagogy of attendance
- Achieve the prestigious Bronze KITE Mark
- Embed proactive, relational attendance practice
- Engage in school-to-school audits and multi-agency collaboration

What's Included:

- 4 face to face training sessions, delivered by Wayne Harris
- Online consultancy clinic for support
- 20 logins for Inclusive Attendance
- Bronze Kite Mark plaque

(Worth over £1,500)

# Because school means *more*

# EMOTIONALLY BASED SCHOOL NON-ATTENDANCE

20/11/25 - 09:00-15:00  
14/01/26 - 09:00-12:00

Pride Park Stadium

Free of charge  
Funded through the Inclusion Partnership

<https://inclusionpartnership.co.uk/cpd-and-networking/>  
email: [jo.wilkinson@dcct.co.uk](mailto:jo.wilkinson@dcct.co.uk)



## COURSE OUTLINE

Develop an understanding of the impact on students who are having severe difficulties attending school, how to identify those at risk and how to support them.

Objectives and Learning Outcomes:

- How to identify and understand the various factors within a child, home and school which interact to both cause and maintain school non-attendance
- How to gather information for an individual student to understand the push and pull factors around non-attendance
- How to co-construct a plan
- How to work-with and support parents and young people along the way
- Consideration of whole school approaches to prevent risk of school non-attendance

Please note we will do our best to stick with planned tutors and dates, but they may be subject to change. Places for this course are limited

Because school means *more*



# BAGS OF CHARACTER

23/10/25 - 09:30-12:30 (primary)  
13:00-16:00 (secondary)



Darley Barn



Free to access, funded through the  
Inclusion Partnership

**BAGS<sub>OF</sub>  
CHARACTER**  
[www.challengeacademy.co.uk](http://www.challengeacademy.co.uk)

<https://inclusionpartnership.co.uk/cpd-and-networking/>

email: [jo.wilkinson@dcct.co.uk](mailto:jo.wilkinson@dcct.co.uk)

## COURSE OUTLINE

Facilitated by educational leaders and behavioural specialists this highly engaging, fun, dynamic CPD uses practical accessible processes to change behaviour, address and support the following:

- SEMH (Social Emotional and Mental Health)
- PSED (Personal Social and Emotional Development)
- Anxiety -
  - Low level anxiety
  - Social anxiety around friendship groups
  - Emotionally Based School Non-Attendance
- Emotional Regulation, Resilience and Literature
- Ways to adopt a 'Can Do' Growth Mindset
- Ability to Assess and Manage risk and recognise 'Risk Benefits'
- Develop collaborative, inclusive approaches recognised by EEF and Ofsted

Participants will engage in activities from Challenge Academy's 'Bags of Character'. Accredited by CLoTC (Council for Learning Outside the Classroom) and IOL (Institute for Outdoor Learning) and developed over 16yrs by leaders from education and the military the resource is a powerful and versatile tool used by over 2500 certified facilitators UK wide.

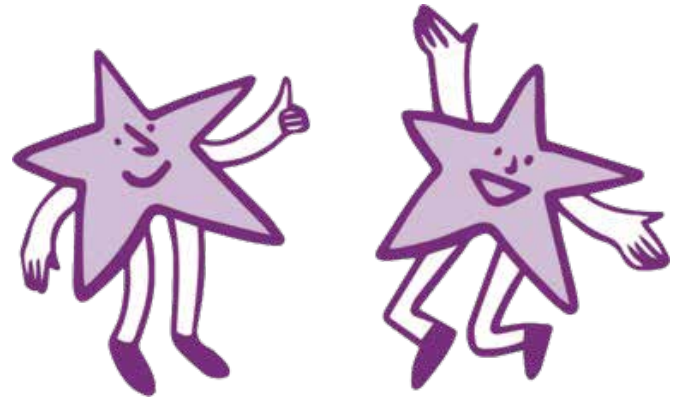
Because school means *more*

# WELLBEING IN THE PRIMARY CLASSROOM

Expressions of interest required  
by 18th July 2025

email:  
michelle.robinson@derby.gov.uk

Free to access  
funded by Public Health, Michelle  
Robinson



## COURSE OUTLINE

Join teacher and award-winning author, Adrian Bethune, in this unique 1-year project. Across 3 terms of CPD, you'll learn about the science of wellbeing and take away practical strategies to embed pupil and staff wellbeing in your community.

### TERM1

- Full day's in-person training
- Create a wellbeing action-plan for your school
- Action-plan review and feedback from Adrian
- Signed copy of Wellbeing in the Primary Classroom

### TERM 2 and TERM 3

- 90 min webinar with Adrian
- Q&A

### ALL YEAR

Access to Teachhappy expert webinar series, covering: Emotion Regulation, Teacher Wellbeing, Measuring wellbeing in Schools, Embedding Mindfulness in Schools, The Role of the SENCO and Wellbeing and Wellbeing in the EYs.

Expressions of interest in this training must be sent to Michelle Robinson by Friday 18th July 2025.

Because school means **more**

# STEPS AUTISM ADVOCATES

24/09/25 - 09:30-14:30

Kedleston Road

Free to access. Funded through Derby City Council STePs

**We are inviting staff from Derby City schools to register their interest by Monday 7th July**  
email: [stepsadmin@derby.gov.uk](mailto:stepsadmin@derby.gov.uk)



**INCLUSION  
PARTNERSHIP**

**STePS**

Specialist Teaching and Psychology Service

**Enabling Opportunity for All**



## COURSE OUTLINE

Would you like to promote a positive attitude towards acceptance and understanding of autism in your educational setting?

Derby City Council Inclusion Services are offering mainstream schools in Derby City the opportunity to train a member of staff to deliver the Autism Education Trust (AET) training within your setting for free. This will enable your setting to deliver the training to all staff, meaning that your workforce will be up to date with good practice, strategies and support for autistic children. They will also become part of the new supportive Autism Advocates Network in Derby where they will have access to additional CPD and information.

Staff need to confirm that they meet the criteria set by AET listed below:

- At least 5 years' experience of teaching autistic children
- 2 years' experience of delivering training
- The ability to motivate and effect change with colleagues
- A commitment to promotion of the AET ethos, programme and approach.

As an Autism Advocate you will receive:

- A full day of training in the Autumn term to include the 'AET Making Sense of Autism'
- Course, training materials and administration information
- Access to high quality AET resources to share with colleagues.
- Access to a supportive network of Autism Advocates across Derby City.
- 3 Network meetings per year to share further training materials and CPD for you to deliver in school.

One place per school is offered for Primary phase and two places for Secondary.

**Because school means more**



# ATTACHMENT & TRAUMA

## E-LEARNING

e-learning webinars to access at a time to suit you.

Free of charge, funded through the Virtual School

<https://virtualschool.derby.gov.uk>

email: [graeme.ferguson@derby.gov.uk](mailto:graeme.ferguson@derby.gov.uk)



### COURSE OUTLINE

The Virtual School have provided an 8 module e-learning course. You will need to have an approved official email address (all school emails are already approved). At the end of the course, colleagues will be able to print a certificate. School Leaders will be updated about enrolments and completion of the course.

#### Modules:

1. Rationale & Context (15 mins)
2. ACES and Understanding Stress (25 mins)
3. The Attachment Gap (15 mins)
4. Behaviour as Communication (20 mins)
5. The Importance of Relationships (10 mins)
6. Responding to Distressed Behaviour (20 mins)
7. Regulation for Adults (10 mins)
8. Relational Repair (20 mins)

Because school means *more*

# INCLUSION WEBINARS

Free of charge, funded through the Virtual School, Public Health and Inclusion Partnership



<https://inclusionpartnership.co.uk/inclusion-webinars/>  
email: [jo.wilkinson@dcct.co.uk](mailto:jo.wilkinson@dcct.co.uk)



We have a range of Inclusion Webinars and resources on our website for schools to access. Please note these are password protected. Please get in touch if you don't know the passwords.

- Behaviour – is there another way?  
-Dave Whitaker  
-3 modules
- Neurobiology of Learning  
-Dr Andrew Curran  
-3 modules
- Positive Play  
-Alison Lumley  
-6 modules

Because school means **more**

# NETWORKING

<https://inclusionpartnership.co.uk/cpd-and-networking/>

email - [jo.wilkinson@dcct.co.uk](mailto:jo.wilkinson@dcct.co.uk)



## Inclusion Networking 2025/6

Our Inclusion Network Meetings will run to a new format in 2025/6. Throughout the year we will run a range of inclusion networking opportunities to learn from each other and support growing our network. Any member of school staff is welcome to attend.

### •Inclusion Insights ‘Come and See Us’

Some of our schools will open their doors to share an inclusive approach. This will run as a pilot during 2025/6 with the plan to expand the number of events/ schools. Spaces will be limited for these visits.

### •Inclusion Networking

Each term we will run coaching circles to discuss inclusion challenges and share solutions. These will take part at Pride Park Stadium and run from 08:30 until 10:00.

### •Virtual Updates

We'll also share regular virtual updates to keep you in the loop! For further information, please contact: [jo.wilkinson@dcct.co.uk](mailto:jo.wilkinson@dcct.co.uk)

|             | Date       | Event                | Location               |
|-------------|------------|----------------------|------------------------|
| Autumn Term | 15/10/2025 | Inclusion Networking | Pride Park Stadium     |
|             | TBC        | Come and see us      | Chellaston Academy     |
| Spring Term | 11/02/2026 | Inclusion Networking | Pride Park Stadium     |
|             | TBC        | Come and see us      | Alvaston Infant School |
| Summer Term | 15/04/2026 | Inclusion Networking | Pride Park Stadium     |
|             | TBC        | Come and see us      | Shelton Junior School  |

Because school means *more*



Because school means *more*

SAVE THE  
DATE!

Inclusion Conference  
25th June 2026

Designated Senior Mental Health Leads

08:30 - 10:30  
08/10/2025  
26/11/2025  
21/01/2026  
11/03/2026  
06/05/2026  
17/06/2026

Contact: michelle.robinson@derby.gov.uk

Designated Teacher for Looked after  
Children

08:30 - 10:30  
Pride Park Stadium  
26/11/2025  
17/03/2026  
18/06/2026

Booking link:  
<https://inclusionpartnership.co.uk/cpd-and-networking/>  
Contact:  
elizabeth.williams@derby.gov.uk

Attendance Network (Secondary)

13:00-15:00  
24/09/2025  
21/02/2026  
23/04/2026  
08/07/2026

Contact: fiona.tizzard@derby.gov.uk

Secondary Heads Group

10/10/2025  
05/12/2025  
06/02/2026  
20/03/2026  
01/05/2026  
10/07/2026

HSLM (Primary Heads)

26/09/2025  
21/11/2025  
23/01/2026  
13/03/2026  
20/05/2026  
10/07/2026

Special & AP Heads

03/10/2025  
20/11/2025  
05/02/2026  
26/03/2026  
15/05/2026  
16/07/2026

Because school means *more*